



Technical help and tips
support line : +33 (0)4 95 04 55 90

- Components
- Dimensions and pole components
- The graphic panel : cutting format
- The graphic panel : flexible media recommended
- Creating graphic walls





support line : +33 (0)4 95 04 55 90

Components

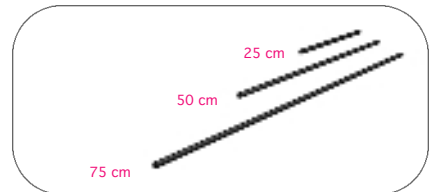
● The foot

The foot comprises two parts: an aluminium foot, into which the plastic ankle is fitted. The pole is held upright by the ankle.



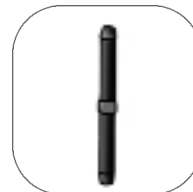
● The pole

The aluminium pole is made up of tube sections that fit into each other using elastic connectors.



● The elastic connector

This part allows you to fit different tube sections together. The elastic connector remains fixed even after dismantling the tube sections, so that it does not get lost.



● The pole head

Made of aluminium, the pole head clips onto the groove that runs along the length of the graphic rod. A rubber ring allows the pole head remain fixed to its tube section after dismantling the structure.



● The graphic rods (trims)

The graphic mounting rods (or trims) are made of plastic identical, therefore interchangeable. Slide the graphic panel into the clamp and simply press down using your fingers. The graphic covers the trim entirely allowing for a smooth visual result.



The rods are supplied with caps that fit onto the ends for a cleaner finish.





support line : +33 (0)4 95 04 55 90

Dimensions and pole components

- Chronoexpo® 3 comes in 6 widths
 > 40 cm > 50 cm > 60 cm > 80 cm > 100 cm > 120 cm
 All widths work with all heights.

For special volume orders agreed with the manufacturer, it is possible to purchase graphic trims in other widths: please contact our sales department.

- Chronoexpo® 3 comes in 6 heights
 > 75 cm > 100 cm > 125 cm > 150 cm > 175 cm > 200 cm

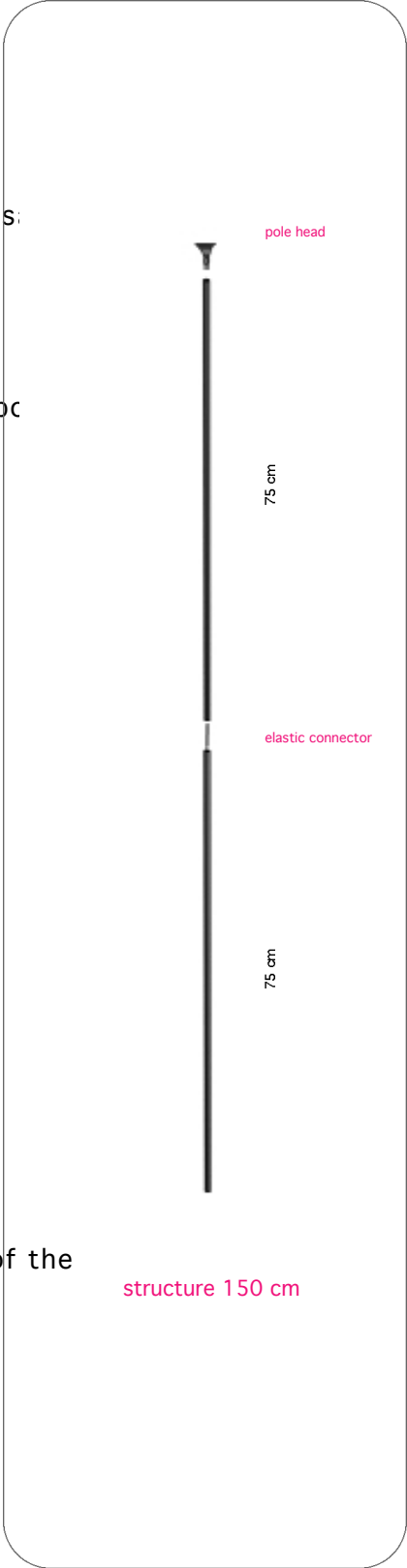
The height of the structure is achieved by assembling different pole sections that fit into each other using elastic connectors. There are three sizes of pole section: 25 cm, 50 cm and 75 cm.

POLE COMPONENTS

Structure (in cm)	Pole sections required	Number of elastic connectors
75	75	0
100	75 + 25	1
125	75 + 50	1
150	75 + 75	1
175	75 + 75 + 25	2
200	75 + 75 + 50	2

- Smaller heights are inclined, bigger heights are vertical
 There is a difference of a few centimetres between the height of the pole in our references and the actual height of the structure.

Height of the pole in our references	75	100	125	150	175	200
Actual height of the structure	82.5 inclined structure	107.5 inclined structure	132.5 inclined structure	151 vertical structure	177 vertical structure	203 vertical structure



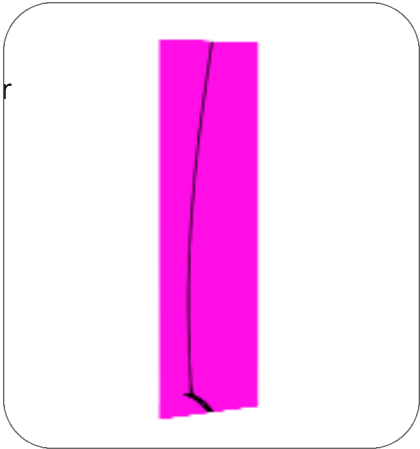


support line : +33 (0)4 95 04 55 90

The graphic panel :
cutting format

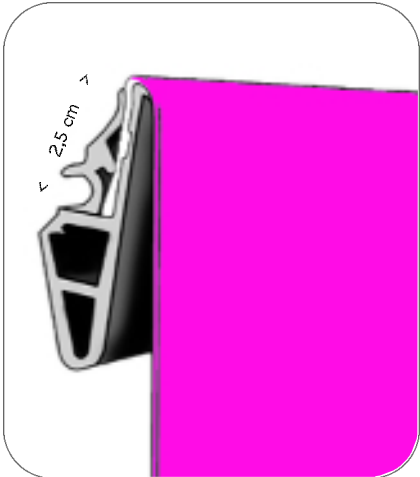
● The height of the graphic panel is different from the height of the structure
To ensure that the graphic panel is correctly held under please follow the guidelines below when cutting the panel.

● Warning : please note that 2.5 cm both at the top and bottom of the graphic panel will be covered by the graphic rods
Graphic artists that design the visual must know that 2.5 cm at the top of the panel, as well as 2.5 cm at the bottom, will be covered by the graphic mounting rods. Therefore, it is necessary to avoid placing any text or graphic elements in these zones. Nevertheless, we recommend printing the



CUTTING FORMAT

Structure in cm	Cutting dimensions in cm	Visible height in cm
75	95	90
100	117	112
125	140	135
150	156	151
175	182	177
200	208	203





support line : +33 (0)4 95 04 55 90

The graphic panel :
flexible media recommended

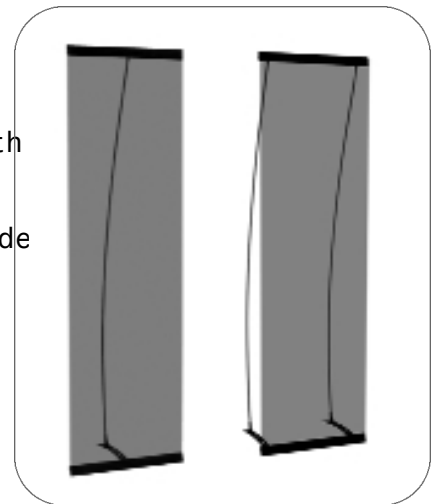
● Single pole or double pole?

The choice between these two solutions depends on the width structure:

- For widths from 40 to 80 cm: a single pole is sufficient.
- For widths of 100 and 120 cm: the double pole is recommended

● Chronoexpo® 3 is designed for flexible media

Panels that are too heavy or that are laminated with too rigid a film do not fold well around the graphic mounting rods.



SUGGESTED MEDIA AND POLES

Structure (in cm)	Widths 30 or 40 or 60 or 80		Widths 100 or 120	
	Single pole	Double pole	Single pole	Double pole
75	up to 350 g/m ² laminates recommended 2x75 microns	<u>Not required</u>	<u>Not recommended</u>	up to 350 g/m ² laminates recommended 2x75 microns
100	up to 350 g/m ² laminates recommended 2x75 microns	<u>Not required</u>	<u>Not recommended</u>	up to 350 g/m ² laminates recommended 2x75 microns
125	up to 350 g/m ² laminates recommended 2x75 microns	<u>Not required</u>	<u>Not recommended</u>	up to 350 g/m ² laminates recommended 2x75 microns
150	up to 350 g/m ² laminates recommended 2x75 microns	<u>Not required</u>	<u>Not recommended</u>	up to 350 g/m ² laminates recommended 2x75 microns
175	up to 350 g/m ² laminates recommended 2x75 microns	<u>Not required</u>	<u>Not recommended</u>	up to 350 g/m ² laminates recommended 2x75 microns
200	up to 350 g/m ² laminates recommended 2x75 microns	<u>Not required</u>	<u>Not recommended</u>	up to 350 g/m ² laminates recommended 2x75 microns

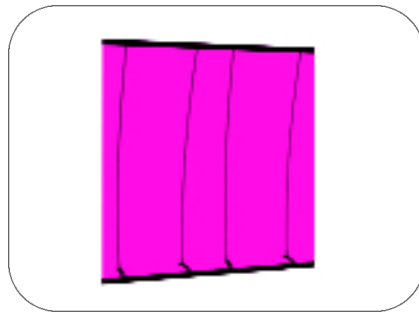
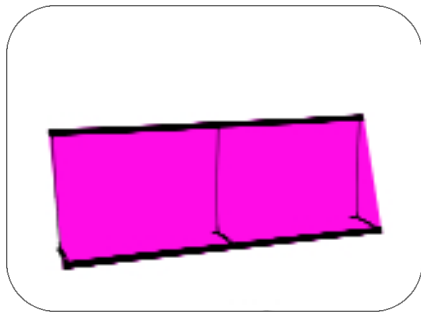




Creating graphic walls

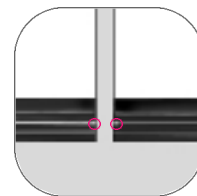
support line : +33 (0)4 95 04 55 90

● It is possible to adjoin structures side-by-side to create panoramic graphic walls: background scenery, decors, dividing screens...



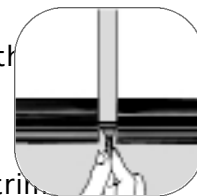
● Printing the graphic in panel sections

- > To adjoin the graphic trims :
 - either use magnets
 - or use the pole head and the foot
- > To adjoin the panel sections :
 - use the magnetic junction kit.



Small magnets

These are inserted into the ends of the graphic mounting rods, in the groove.



The pole head and foot

Affix the pole head and the foot at the point where the graphic trim

The magnetic junction kit

Fix the adhesive magnetic strip to the back of the graphic panel sections to be adjoined.



● Printing the graphic on one single panel

Two options are available :

- > Either juxtapose the graphic mounting rods
- > Or, use special order wide format graphic mounting rods.

Juxtapose the graphic rods (or trims)

The graphic panel is gripped by trims placed end-to-end.

Special order wide format graphic mounting rods

For special volume orders agreed with the manufacturer, it is possible to purchase graphic trims in wide formats: please contact our sales department.

